

1 FIRST FLOOR REFLECTED CEILING PLAN

 Scale: 1/8" = 1'-0"

- LEGEND:**
- 2x4 FLUORESCENT LIGHT FIXTURE
 - 2x2 FLUORESCENT LIGHT FIXTURE
 - FLUORESCENT DOWNLIGHT FIXTURE
 - DECORATIVE PENDANT LIGHT
 - DECORATIVE SUPPORT FRAMING FOR 200LB. HIL. LOAD
 - STRIP FLUORESCENT FIXTURE

TMA
Timothy Morgan Associates
Architects - Planners

760 Tri-State International Center
Suite 100
14757 Woodloch Forest Drive
Woodloch Forest, Illinois 60090
847-374-0257 Fax
847-374-0257 Bk

14757 Woodloch Forest Drive
Woodloch Forest, Illinois 60090
212-261-6742 Fax
212-261-6742 Bk

120 HARVESTER DRIVE
THREE STORY OFFICE (SHELL) BUILDING
N.E. CORNER of HARVESTER DRIVE & FRONTAGE ROAD, BURR RIDGE, ILLINOIS
A DEVELOPMENT FOR MARS EQUITIES, INC.

"I hereby certify under oath that these plans were prepared by me or under my direct supervision, that I am familiar with the codes and ordinances of the Village of Burr Ridge, and to the best of my knowledge comply with the Building Ordinance, Zoning Ordinance and other applicable codes and ordinances of the Village of Burr Ridge, Illinois."

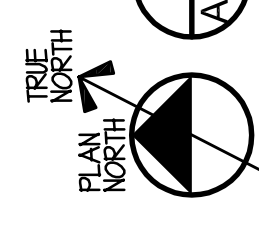
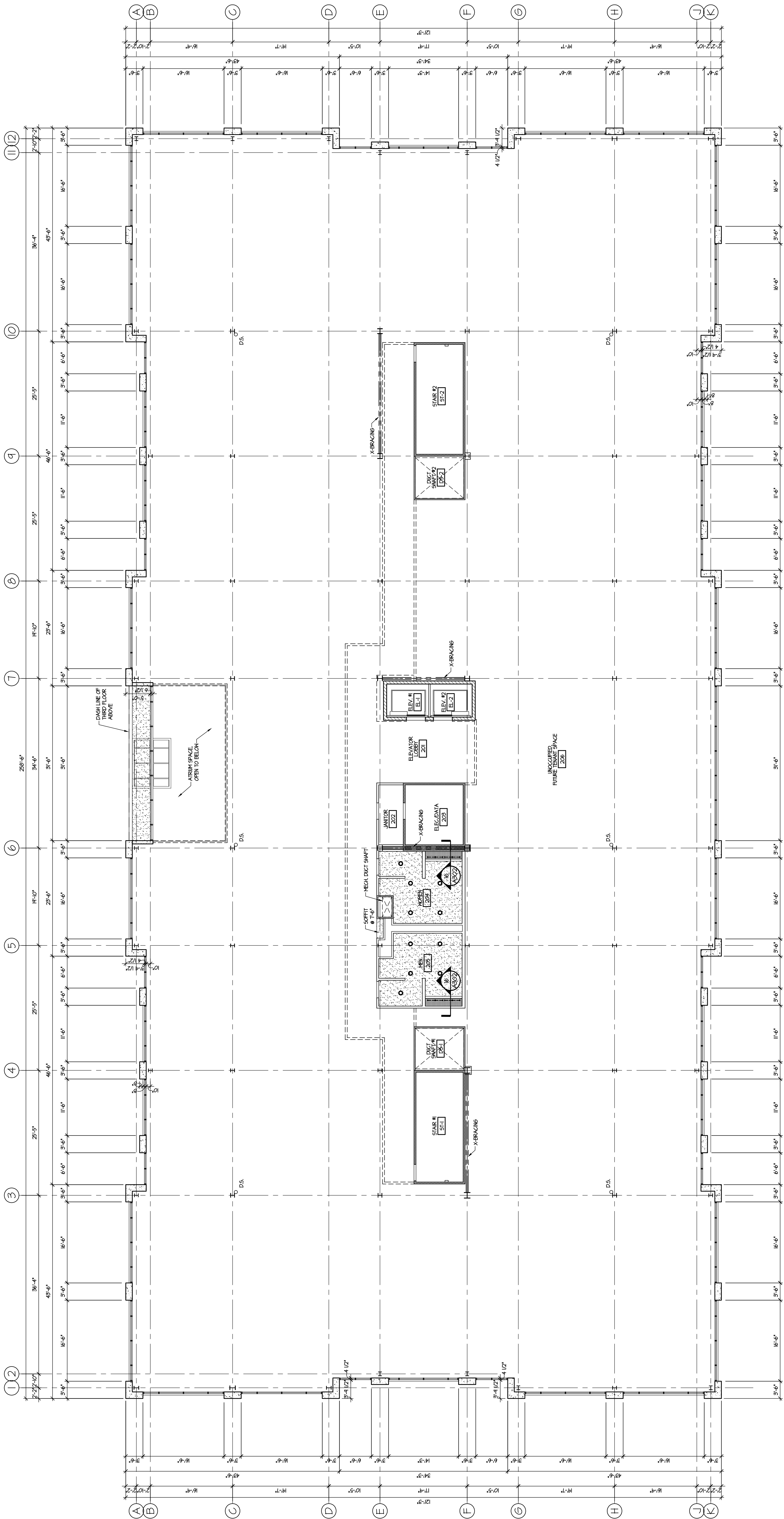
© COPYRIGHT 2006
ALL RIGHTS RESERVED. THESE DOCUMENTS MAY NOT BE REPRODUCED IN WHOLE OR IN PART WITHOUT THE WRITTEN CONSENT OF Timothy Morgan Associates.

No.	DATE	REVISION DESCRIPTION
1	03/26/07	PERMIT REVIEW

DATE: 11/09/06
JOB NUMBER: 06-015

FIRST FLOOR REFLECTED CEILING PLAN

SHEET No. **A501**



1 SECOND FLOOR REFLECTED CEILING PLAN
 Scale: 1/8" = 1'-0"

- LEGEND:**
- 2x4 FLUORESCENT LIGHT FIXTURE
 - 2x2 FLUORESCENT LIGHT FIXTURE
 - FLUORESCENT DOWNLIGHT FIXTURE
 - DECORATIVE PENDENT LIGHT
 - PROVIDE SUPPORT FRAMING FOR 200LBS. HRL. LOAD
 - STRIP FLUORESCENT FIXTURE

TMA
 Architects - Planners
 Timothy Morgan Associates

761 Tri-State International Center
 Suite 100
 14157 Woodloch Forest
 212-461-9742
 847-374-0257 fax

10185
 New York, New York
 212-461-9742
 212-461-9742 fax

© COPYRIGHT 2006
 ALL RIGHTS RESERVED. THESE
 DOCUMENTS MAY NOT BE
 REPRODUCED IN WHOLE OR IN PART
 WITHOUT THE WRITTEN
 CONSENT OF Timothy Morgan Associates.

"I hereby certify under oath that these plans were
 prepared by me or under my direct supervision,
 that I am familiar with the codes and ordinances of
 the Village of Burr Ridge, and to the best of my
 knowledge comply with the Building Ordinance,
 Zoning Ordinance and other applicable codes and
 ordinances of the Village of Burr Ridge, Illinois."

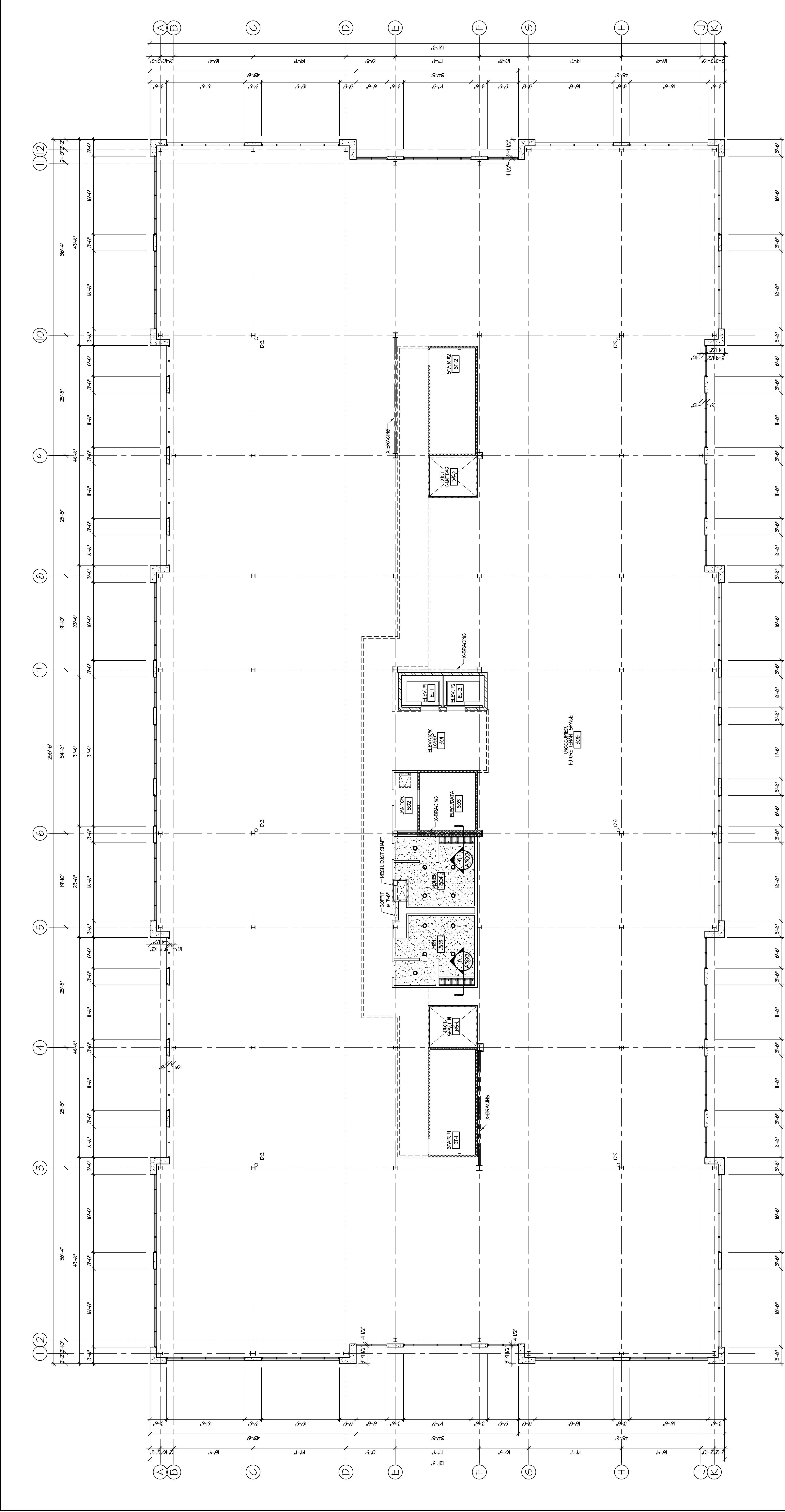
**120 HARVESTER DRIVE
 THREE STORY OFFICE (SHELL) BUILDING
 N.E. CORNER OF HARVESTER DRIVE & FRONTAGE ROAD, BURR RIDGE, ILLINOIS
 A DEVELOPMENT FOR MARS EQUITIES, INC.**

No.	DATE	REVISION DESCRIPTION

DATE: 11/09/06
 JOB NUMBER: 06-015

SECOND FLOOR REFLECTED
 CEILING PLAN

SHEET No.
A502



1 THIRD FLOOR REFLECTED CEILING PLAN

 Scale: 1/8" = 1'-0"

- LEGEND:**
- 2x4 FLUORESCENT LIGHT FIXTURE
 - 3x2 FLUORESCENT LIGHT FIXTURE
 - FLUORESCENT DOWNLIGHT FIXTURE
 - DECORATIVE PENDANT LIGHT
 - PROVIDE SUPPORT FRAMING FOR 2000'S TRUSS LOAD
 - STRIP FLUORESCENT FIXTURE

TMA
Timothy Morgan Associates
Architects - Planners

760 T&E International Center
Suite 100
1015 New York Street
Burr Ridge, Illinois 60089
630-374-0200
847-374-0257 fax
212-481-9742 fax

SHEET No. **A503**

THIRD FLOOR REFLECTED CEILING PLAN

DATE: 11/09/06
JOB NUMBER: 06-015

"I hereby certify under oath that these plans were prepared by me or under my direct supervision, that I am familiar with the codes and ordinances of the Village of Burr Ridge, and to the best of my knowledge comply with the Building Ordinance, Zoning Ordinance and other applicable codes and ordinances of the Village of Burr Ridge, Illinois."

© COPYRIGHT 2006
ALL RIGHTS RESERVED. THESE DOCUMENTS MAY NOT BE REPRODUCED IN WHOLE OR IN PART WITHOUT THE WRITTEN CONSENT OF Timothy Morgan Associates.

No.	DATE	REVISION DESCRIPTION

120 HARVESTER DRIVE
THREE STORY OFFICE (SHELL) BUILDING
 N.E. CORNER of HARVESTER DRIVE & FRONTAGE ROAD, BURR RIDGE, ILLINOIS
A DEVELOPMENT FOR MARS EQUITIES, INC.